

Gearing UP For The REVOLUTION

WWW.TORCUP.COM



RP PNEUMATIC TORQUE WRENCH



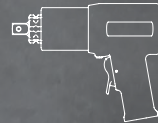
THE PERFECT BALANCE BETWEEN
LIGHTWEIGHT AND DURABLE

REDESIGNING THE GEAR. OPTIMIZING THE MATERIALS.
PERFECTING THE FIT. THAT WAS OUR OBJECTIVE!

THE RESULT IS A PNEUMATIC WRENCH THAT IS OPTIMIZED DOWN TO THE FINEST
DETAIL. THE BACKBONE OF ANY PNEUMATIC TORQUE WRENCH IS ITS GEARS.
THE GEARS THAT ARE THE DRIVING FORCE BEHIND THE RP SERIES ARE DESIGNED
WITH AN INCREASED DURABILITY FACTOR. THE FULL LINE OF RAPTORS HAVE ENDURED
MORE ABUSE FROM LONG TERM TESTING THAN THESE TOOLS WILL EVER EXPERIENCE
IN THE FIELD. IF YOU REQUIRE A PNEUMATIC TORQUE WRENCH THAT WILL BE
THERE FOR YOU ON THE JOB, LOOK NO FURTHER THAN THE TORCUP RAPTOR!



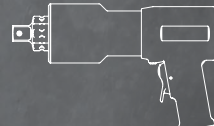
RP-500 **SINGLE SPEED**
TORQUE RANGE 78-530
FREE SPEED 16.5-44 RPM



RP-1000 **SINGLE SPEED**
TORQUE RANGE 148-1030
FREE SPEED 7-15 RPM



RP-2000 **SINGLE SPEED**
TORQUE RANGE 231-2015
FREE SPEED 3.5-9 RPM



RP-3000 **SINGLE SPEED**
TORQUE RANGE 484-3070
FREE SPEED 1.75-4 RPM

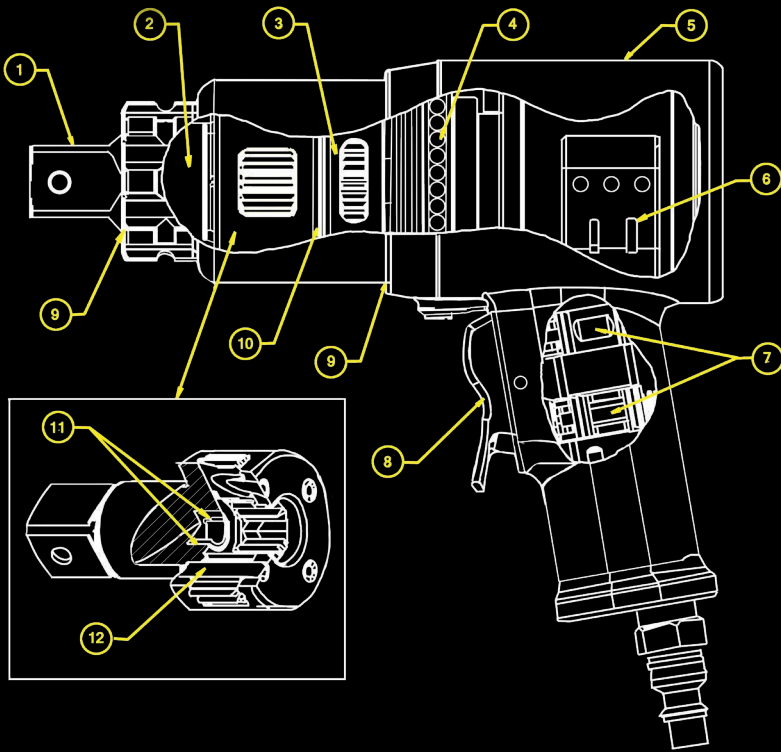


RP-6000 **SINGLE SPEED**
TORQUE RANGE 714-5990
FREE SPEED 1.25-3 RPM

Requirements: Air Pressure 10-90 psi - Flow 45-55 CFM

THE POWER INSIDE

1. HARDENED ALLOY STEEL FOR DURABILITY AND LONG CYCLE LIFE
2. BEARINGS SUPPORT THE LOADS EXPERIENCED AT THE SQUARE DRIVE
3. MULTIPLE STAGE PLANETARY GEAR SYSTEMS WITH OPTIMIZED TOOTH DESIGN
4. SMOOTH BALL BEARING ROTATION OF THE GEARBOX HOUSING INDEPENDENT FROM THE MOTOR HANDLE
5. LIGHTWEIGHT ALUMINUM HANDLE WITH DURABLE, STLIP-RESISTANT TEXTURED COATING
6. ULTRA-EFFICIENT AIR MOTOR DESIGNED FOR EASY MAINTENANCE
7. CARTRIDGE-STYLE VALVES PROVIDE EASY REPLACEMENT
8. ONE FINGER TRIGGER CONTROL FOR FORWARD AND REVERSE
9. O-RINGS SEAL GREASE IN WHILE KEEPING WATER AND DIRT OUT
10. THRUST BEARING BETWEEN STAGES ISOLATE THE MOTOR WHEN USED IN ALL ORIENTATIONS
11. GEARS RUN ON LOW FRICTION, HIGH STRENGTH BEARING SLEEVES
12. TOOL STEEL PINS IN EACH STAGE CARRIER



POWER ENGINEERED

| MODEL NUMBER | RP-500 | RP-1000 | RP-2000 | RP-3000 | RP-6000 |
|------------------------|--------|---------|---------|---------|---------|
| Square drive | 3/4" | 1" | 1" | 1" | 1 1/2" |
| Min. Torque (ft/lbs) | 78 | 148 | 231 | 484 | 714 |
| Max. Torque (ft/lbs) | 530 | 1030 | 2015 | 3070 | 5990 |
| Min. Torque (nm) | 106 | 201 | 313 | 656 | 968 |
| Max. Torque (nm) | 719 | 1396 | 2732 | 4162 | 8121 |
| Height A (in) | 7.89" | 7.89" | 7.89" | 8.06" | 8.69" |
| Height A (mm) | 200.4 | 200.4 | 200.4 | 204.7 | 220.7 |
| Square Drive B (in) | 0.75" | 1" | 1" | 1" | 1.5" |
| Square Drive B (mm) | 19.05 | 25.4 | 25.4 | 25.4 | 38.1 |
| Length C (in) | 6.80" | 8.87" | 9.40" | 10.62" | 12.32" |
| Length C (mm) | 172.7 | 225.3 | 238.8 | 269.7 | 312.9 |
| Diameter D (in) | 2.56" | 2.85" | 3.09" | 3.75" | 5.00" |
| Diameter D (mm) | 65.0 | 72.4 | 78.5 | 95.3 | 127.0 |
| Weight (lbs) w/o arm | 9 | 12 | 16 | 20 | 36 |
| Weight (kg) w/o arm | 4.1 | 5.4 | 7.3 | 9.1 | 16.3 |
| Performance Data (RPM) | | | | | |
| - RPM @ 10 psi | 16.5 | 7 | 3.5 | 1.75 | 1.25 |
| - RPM @ MAX psi | 44 | 15 | 9 | 4 | 3 |
| - Tool Max psi | 80 psi | 70 psi | 90 psi | 65 psi | 90 psi |



RAPTOR™
THE WEAPON OF CHOICE

SPEED - WE REVOLUTIONIZE THROUGH EFFICIENCY!

WEIGHT - WE CUT WEIGHT WITHOUT SACRIFICING DURABILITY!

STRENGTH - WE KNOW HOW TO MAKE ALLOYS PERFORM!



RP-F/R/L

Control torque output with ergonomic F/R/L unit.

Air pressure measured with PSI/BAR liquid filled gauge.

Adjustable lubricator for proper "Air Tool Oil" drip.

Ergonomic F/R/L frame in safety yellow with hose storage.

Dimensions:

Width 9" Height 12" Length 12"

Weight 12 lbs



TorUP

Worldwide Headquarters

1025 Conroy Place

Easton, PA 18040 USA

TOLL FREE: 1-888-TorUP-1

TELEPHONE: 1-610-250-5800

FAX: 1-610-250-2700

www.torcup.com



Catalog 2016 03

TorcUP products are subject to continual development and TorcUP reserves the right to make changes to the specifications and design of their products without prior notice. All rights are reserved. Reproduction in whole or in part without permission of TorcUP Inc. is prohibited.